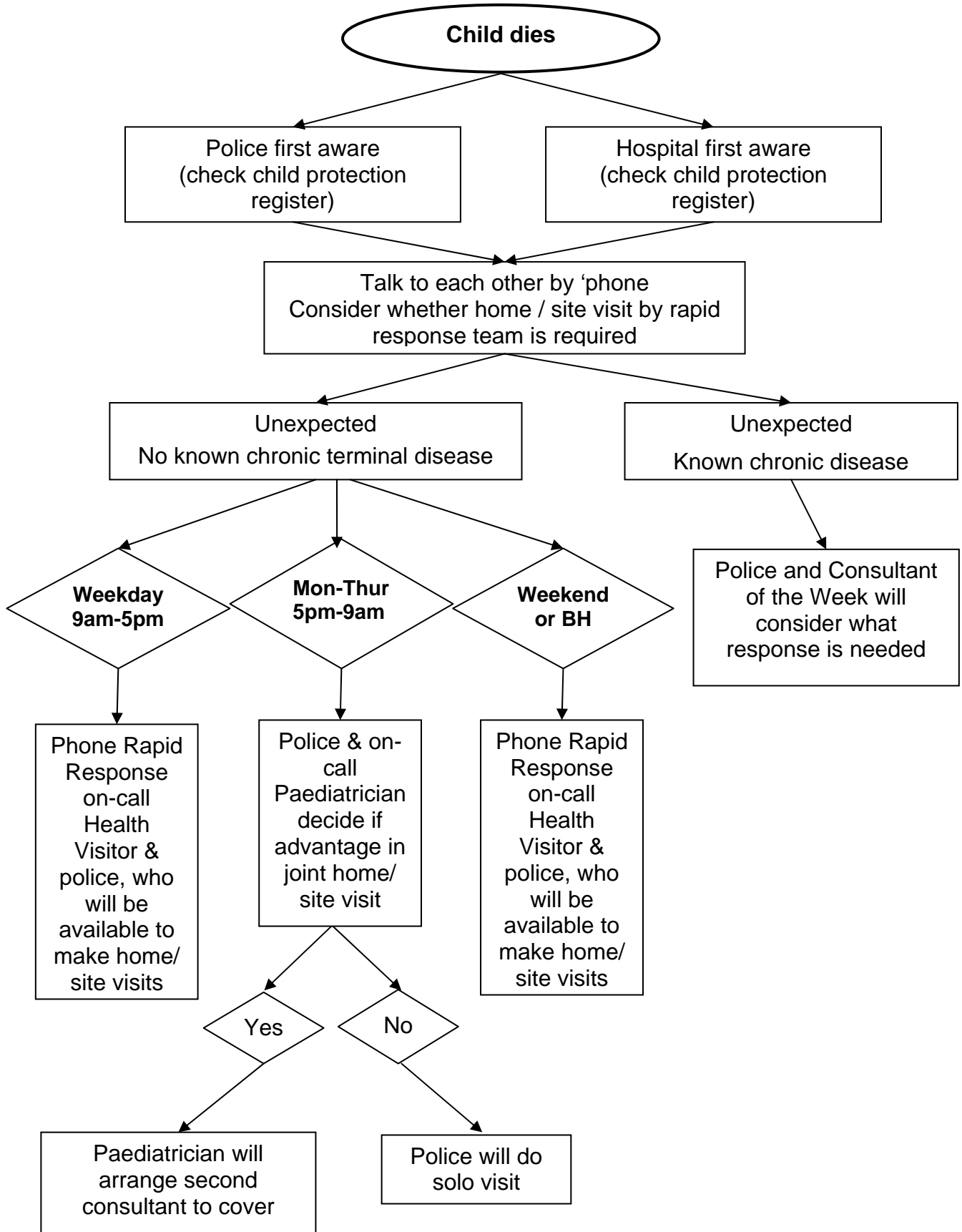


Child Deaths – Initial Response to Unexpected Deaths



CONTACTS FOR CHILD DEATHS IN WILTSHIRE AND SWINDON

On-call Paediatricians

Swindon- Great Western Hospital	01793 604020
Wiltshire- Salisbury District Hospital	01722 336262
Royal United Hospital	01225 731500

Local Authority Social Care Duty Teams (Mon to Fri: 9.00am – 5:00pm)

Swindon	01793 466903
Wiltshire	01225 713000

Emergency Duty Teams (7 days a week: 5.00pm – 9.00am)

Swindon	01793 436699
Wiltshire	0845 6070888

LSCB Business Managers

Swindon – Lesley Boorman	01793 466839
Wiltshire – Angie Hael	01225 718093

Child Death Overview Panel Chair

Maggie Rae	01380 733738
------------	--------------